

Orbesoft, Inc.

## Version 5 Grows

### Orbesoft's latest version gains momentum

#### New Features brief

- Dynamic AS/400 (iSeries) connectivity enables robust multi hosted projects.
- Dynamic Database connectivity serves test and production environments very well
- Dynamic logging can be started and stopped any time by a project automation
- Server database extends to MySQL and MSSQL

Version 5 of OrbeSoft<sup>®</sup> was introduced in a series of feature releases. The testing process made it into production systems in record time.

The licensing has been improved to solve all reported issues for this process. The process of licensing can now be completely automated. Changes in product features or quantities no longer require customers to perform the task of entering new keys.

Graphical Client improvements have reduced IT support staff time by enabling automatic updating from the OrbeSoft<sup>®</sup> server. No more collecting units up and loading an updated client. For those of

you that do not currently leverage the Graphical User Interface (GUI), now is the time to begin looking at what possibilities it can bring your organization. Think in terms of Smart phones on a 3G network. You can now bring applications such as credit checking, sales order entry and updating to your sales representatives in the field and this is just touching the surface of possibilities.

The GUI client enables full use of the touch screen, use of color and images to support your applications. Sometimes color alone will improve user efficiency since red can depict an error situation and green can imply continue, all is



**We have been cooking up some new high tech features that will equate to savings!**

well, all without even reading the informational text that is being displayed.

#### Inside this issue:

- Extending your reach with ADC **2**
- Workflow Automation **2**
- Integrating Applications **2**

### OrbeSoft<sup>®</sup> works the Trade Show Floor

OrbeSoft<sup>®</sup> has infiltrated into the world of extending the sales reach. With mobile enablement and the better speeds that 3G offer, a few users have extended some applications from their ERP system to better serve their sales force.

Real-time inventory quantity inquiries with the ability to enter an order against the product have reduce the time lag of processing orders and making promises that cant be kept due to delayed batched order processing. A favorable side benefit from this imple-

mentation is that it has reduced customer service calls and the dependency of the office while working extended hours on a trade show floor. Of course not all trade shows are the type where you take orders but even so there may be a place for real time information.



Graphical clients are now the standard rather than the hard to reach option.

## Extending your reach with ADC

Now is the time for you to extend your current use of automated data collection (ADC).

While the economy has many companies pulling in on the reigns, some are galloping away and putting distance between themselves and their competition.

Implement high-tech solutions into your operations now that you have time to work the kinks out of it. Pilot that “Quick Pick”

concept and introduce new efficiencies into your operations before you get too busy.

Many companies stop introducing bar-coded solutions once they have satisfied the loudest department requirement. They leave the more cost effective follow up projects out until they are demanded. Secondary projects are some of the most cost effective projects available to OrbeSoft® customers. Talk with

your work force and see where the next point of pain is located.

Orbesoft Inc. has continued to help existing customers with reduced labor rates and improved lead times. The average project extension or addition literally can be accomplished with a day or two of labor.

Need some ideas? Call us and discuss current trends and how new techniques are being leveraged.

## Workflow Automation

A popular method of *get more done with less* is to utilize automation abilities of OrbeSoft® in your back office.

Excellent candidates for this are programs where a user types in very little data but yet must step through many screens. Often the output from this application is then used in another application to complete the task.

OrbeSoft® introduces the capability of taking the few data fields all at once and then it wades through the applications numerous screens grabbing information that the user may need.

Another form of automation monitors item receipts and sends a text message to a user when a HOT or Important item arrives. This sort of automation is completely detached

from any users and simply watches for transactions and then executes desired commands.

Yet another form of automation might set-up cycle-count requests for items that have a negative inventory balance.

OrbeSoft® will become a valued player in your office working 24x7 without requiring overtime.

*“ Integrated applications do not have to reside on the same host system or even the same platform ”*

## Integrating Applications

Don't key it in twice! Not only is double keying inefficient, but it also guarantees increased errors.

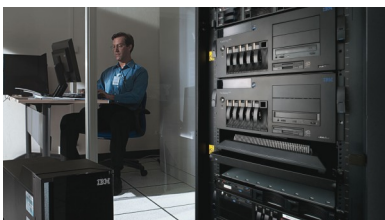
Use an OrbeSoft® mapped project to capture data input and messages from one of the applications. Then allow built in workflow automations to deliver

the data into the second application. These applications do not have to reside on the same host system nor the same host platform. They don't even have to reside in the same state for that matter.

We see a lot of these opportuni-

ties due to right priced application islands. There are many reasons why you might find yourself in this situation, but you can relax in knowing you have a single effective solution.

Stay tuned for more...



OrbeSoft® SaaS offerings expand integration in a boundless world.